



**eBoard** LED

# MULTI TOUCH SCREEN

The right screen for all purposes





eBoard



**A1 eBoard**

## Unlimited Possibilities With Your Imagination

eBoard is an integrated Interactive Touch Screen that utilises Optical Sensor Technology.

Its applications are limitless, ranging from educational experiences, presentations, boardroom and conference room collaboration to being used as interactive information kiosks. By taking full advantage of the Optical Sensor Technology, the eBoard maintains accuracy, responsiveness and sensitivity, whilst delivering full high definition images in almost any environment.

A1-SYS concepts and ideas are

# EASY · SIMPLE · SMART

Captivate your audience when you open applications, navigate the web, use the virtual keyboard to type information, annotate over the top of the displayed information or utilise your existing interactive whiteboard software. The eBoard simply plugs into your laptop, PC, or Mac via the supplied USB cable. You can also connect wirelessly to your iPad for total control at your fingertips.

eBoard allows you to access content over the network or internet then add hand written comments with the included eBoard pen tool. You can access content including powerpoint, photos, videos, e-learning, video conferencing or distance learning, online content and more.

## WHY eBOARD?



### 30,000 hours Reliable Durability and Accurate Touch Sensor

The lifespan of the LED panel is approximately 30,000 hours (or about 15 years when used 8 hours a week day). The eBoard's accurate and responsive dual touch Optical Sensor Technology enables light touch sensitivity all the way to the corners of the screen. Other features include a toughened frame and a scratch, cut and impact resistant 5T glass screen.



### High resolution LED screen

eBoard's full HD (1920x1080p) LED screen offers a 170 degree viewing angle ensuring a great view from any position. The toughened anti-glare glass enables you to use the screen under any lighting conditions, minimising eye fatigue and enhancing the audience's viewing experience.



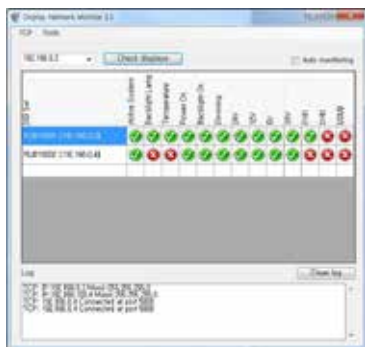
### Interactive, Infinite Options

eBoard interactive software comes as standard so you can write, draw, scribble, highlight, circle, change colours, line thickness, erase, undo and so much more... The power is yours and limited only by your imagination.

## KEY BENEFITS

- 30,000 hour life with no consumables and no maintenance required
- USB port to interface with PC, laptop or Mac, simply plug and play
- Light touch sensitivity, no pressure is required
- 10 simultaneous touch and gesture capability
- Soft write on the screen: Anti-noise write technology (supports all MS Windows Fonts) Whisper-tip stylus (256 Color and fluorescent pen), right and left hand mouse buttons, drag & drop, keyboard character recognition function
- RGB colour (16,777,216 Colour) 16,000,000-pixel, precise touch resolution
- When combined with the ePodium, your presentations will step up to the next generation of e-learning
- Write/annotate on the eBoard by finger touch or with a stylus pen
- The stylish design makes it easy to mount on a wall or a portable stand

## AUTO STATUS REPORT



### SELF / PANEL

1. Active System
2. Active Panel Lamp
3. Over Temperature
4. Active Power On
5. Active Backlight On
6. Active Backlight Dimming

### POWER

7. Active DC 24V
8. Active DC 12V
9. Active DC M5V
10. Active DC S5V

### SOURCE

11. Not Connected No Signal DVI1
12. Not Connected No Signal DVI2
13. Not Connected No Signal RGB

## PORTABLE STAND

All of the eBoard's sizes can be securely mounted on this stylish yet robust mobile stand designed for optimum viewing height.

All power and connectivity cabling and even a four way power adaptor can be hidden from view in the cable management compartment which has simple front access and a removable cover ideal to place a PC inside it.

Supplied with 5cm heavy duty wheels, locking and 4 height adjustable feet as standard. Available in contemporary Black framework that will match the eBoard colours.





## PROFESSIONAL ARENAS

Use more powerful applications when designing, calculating, modelling, or assessing medical situations, to create a 'hands on' example, or for teaching and demonstration purposes.

### Conferences & Meetings

- Use it as a presentation medium; share documents annotate or edit in real time, and brainstorm ideas
- Allows you to interact with other people remotely using teleconference, or via an existing network



## ENHANCE LEARNING

Make a motivational and encouraging atmosphere in the classroom with a lot of sensor stimulus and captivating activities.

### Primary Education

- Allows children to learn and work together simultaneously
- Develops sense of sharing and integrates technology into all aspects of the curriculum

### Secondary Education

- Encourages Students to exchange their ideas easily, supporting open discussions
- Helps students to work independently and interact with the teacher at the same time

### Higher Education

- Very effective for lecture, long distance learning, and small group tuition settings
- Record lectures so they can be viewed anywhere, and anytime via WAN or LAN
- Create an Information desk where students can search the courses, subjects, view the administrative information, schedules of each department and more



## BREAK THE ICE

Engage your customers by placing boards in accessible locations such as lobbies, cafes, or museums, and using games, puzzles and fun galleries for them to interact with.

### Entertainment Centre and theme park

- Can be used for children's games, playing video clips, music albums, floor directory information
- Fantastic for displaying interactive information such as attraction guides, photo finders, restaurant bookings and menus, transport time tables, event lists and more

### Events & exhibitions

- Eye catching and intuitive
- Immediately engages customers and visitors with the products or services

## ENGAGE

Engage with users and customers by allowing them to interact with photos, videos, documents, webpages, global maps and all kinds of different applications.

### Hospitality

- Guests can choose their room and check in, compare rooms, and view facilities
- Customers can look up sightseeing options, restaurants, entertainment, shopping locations and check flight times from their rooms or lobby

# SPECIFICATION

SPEC CATEGORY			eBoard LE55G	eBoard LE65G	eBoard LE70G	eBoard LE85G
PANEL	DID PANEL	INCH	55INCH	65INCH	70INCH	55INCH
		RESOLUTION(HORIZONTAL)	1920			1920
		RESOLUTION(VERTICAL)	1080			1080
		BRIGHTNESS	400	360	400	400
		CONTRAST RATIO	5000:1 (Typ.)	4000:1 (Typ.)	4000:1 (Typ.)	5000:1 (Typ.)
		VIEWING ANGLE	178° / 178°			178° / 178°
		PANEL RESPONSE TIME	8ms(Typ. GTG)			8ms(Typ. GTG)
		ASPECT RATIO	16:9			16:9
		REFRESH FREQUENCY	120hz	60hz	60hz	120hz
		BEZEL COLOR / TYPE	Black / Round			Black / Round
		PANEL	Min 30,000 hour			Min 30,000 hour
IP BOARD	INPUT	HDMI	Yes			Yes
		VGA(DSUB)	Yes			Yes
		COMPONENT	Yes			Yes
		DVI	Yes			Yes
		DP	Yes			Yes
		AUDIO	RCA x 1, 2.5mm Audio Jack			RCA x 1, 2.5mm Audio Jack
APPEARANCE	FRAME MATERIAL	Metal Frame			Metal Frame	
WEBCAM	SD USB CAMERA	N/A			N/A	
ASR FEATURE	AUTO SELF-DIGNOSTIC A/D BOARD	Yes			Yes	
OTHERS	REMOTE CONTROL	Included			Included	
	STAND	YES			YES	
	WALL MOUNTABLE	YES			YES	
TOUCH SCREEN	TYPE	Optical sensor			Optical sensor	
	RESOLUTION	32767*32767			32767*32767	
	TOUCH ACCURACY	44mm			44mm	
	GLASS	5T Safety Glass			5T Safety Glass	
	PC INTERFACE	USB2.0 compatible			USB2.0 compatible	
	NUMBER OF SIMULTANEOUS TOUCH	Up to 3 touch			Up to 3 touch	
	DETECTION METHOD					
TEMP.	TEMPERATURE / HUMIDITY	0° - 35° / 20% - 80%			0° - 35° / 20% - 80%	
POWER	POWER(AC)	100V ~ 240V			100V ~ 240V	
	POWER CONSUMPTION	160W	260W	370W	160W	260W
	STAND BY POWER CONSUMPTION	UNDER 1W			UNDER 1W	
DIMENSION	W(mm) X H(mm) X D(mm)	1306 x 800 x 96.7	1550 x 946 x 104.1	1666 x 1012 x 107.6	1306 x 800 x 96.7	1550 x 946 x 104.1
PACKING	SET BOX (WXHXD)	1490 x 380 x 1010	1730 x 380 x 1145	1850 x 490 x 1215	1490 x 380 x 1010	1730 x 380 x 1145
WEIGHT	NET WEIGHT	56kg	93kg	107kg	56kg	93kg
	GROSS PACKAGE WEIGHT	65kg	104kg	121kg	65kg	104kg
	PACKAGE WITH PALLET WEIGHT	74kg	127kg	134kg	74kg	127kg
OSD	LANGUAGE					
ACCESSORIES						



MODEL						
eBoard LE55	eBoard LE65	eBoard LE70	eBoard LE55B	eBoard LE65B	eBoard LE70B	eBoard LE84
CH	65INCH	70INCH	55INCH	65INCH	70INCH	84INCH
	1920			1920		3840
	1080			1080		2160
D	360	400	400	360	400	350
(Typ.)	4000:1 (Typ.)	4000:1 (Typ.)	5000:1 (Typ.)	4000:1 (Typ.)	4000:1 (Typ.)	1600:1 (Typ.)
	178° / 178°			178° / 178°		178° / 178°
	8ms(Typ. GTG)			8ms(Typ. GTG)		8ms(Typ. GTG)
	16:9			16:9		18:09
Hz	60hz	60hz	120hz	60hz	60hz	60hz
	Black / Round			Grey		Black / Round
	Min 30,000 hour			Min 30,000 hour		Min 30,000 hour
	Yes			Yes		Yes
	Yes			Yes		Yes
	Yes			Yes		Yes
	Yes			Yes		Yes
	Yes			Yes		Yes
	RCA x 1, 2.5mm Audio Jack			RCA x 1, 2.5mm Audio Jack		RCA x 1, 2.5mm Audio Jack
	Metal Frame			Aluminium Frame		Metal Frame
	N/A			Yes: 300,000 Pixel, 640x480Resolution Camera Embedded		N/A
	Yes			No		Yes
	Included			Included		Included
	YES			YES		YES
	YES			YES		YES
	Optical sensor			Optical sensor		Optical sensor
	32767*32767			32767*32767		32767*32767
	44mm			44mm		44mm
	5T Safety Glass			5T Safety Glass		5T Safety Glass
	USB2.0 compatible			USB2.0 compatible		USB2.0 compatible
	Up to 10 touch			Up to 10 touch		Up to 10 touch
	CemeraFinger, brush-pencil, special pen or any opaque object					
	0° - 35° / 20% - 80%			0° - 35° / 20% - 80%		0° - 35° / 20% - 80%
	100V ~ 240V			100V ~ 240V		100V ~ 240V
V	260W	370W	160W	260W	370W	370W
	UNDER 1W			UNDER 1W		UNDER 1W
D x 96.7	1550 x 946 x 104.1	1666 x 1012 x 107.6	1306 x 800 x 96.7	1550 x 946 x 104.1	1666 x 1012 x 107.6	1996 x 1205 x 107.6
D x 1010	1730 x 380 x 1145	1850 x 490 x 1215	1490 x 380 x 1010	1730 x 380 x 1145	1850 x 490 x 1215	2255 X 490 X 1455
g	93kg	107kg	56kg	72kg	87kg	135kg
g	104kg	121kg	65kg	85kg	100kg	155kg
g	127kg	134kg	74kg	97kg	113kg	160kg
	Multi Languages					
	Power, D-Sub, HDMI cable, User's Guide, Remote control & Battery					





# INTERACTIVE DISPLAY TABLE SYSTEM

uTable is a touch based screen, just like our eBoards. It is built in a table format for surround presentation, displaying information, and has the ability to recognize up to 10 or 32 simultaneous touches. This enables multiple people to be on the table at the same time. Great for sharing information or for engaging classroom activities where everyone can be hands on at the same time.



## 10 TO 32 SIMULTANEOUS TOUCH

The powerful sensors recognising 10 to 32 simultaneous touches at the same time enables multiple users to be interacting on the table at the same time. Great for brainstorming ideas at a meeting, allowing attendees to contribute and share photographs or data content. Great for classroom activities where numerous students can physically interact with learning resources at the same time.

## VIRTUAL CONTROL

Users can actually control movement and grab any content with their hands/fingers. The uTable recognises gestures making it feel like you have the content in your hand.



## 360 DEGREE VIEW

Enhance the experience of users and customers as they interact on the table's 360 degree surround viewing angle to view photographs, videos, documents, webpages, global maps and all sorts of different applications.



## uTable is ideal to be placed in any environment

- SCHOOL CLASS ROOM
- MEETING ROOMS
- LIBRARY
- FUNCTION ROOMS
- WAITING ROOMS
- BUILDING FOYERS
- SHOP FRONT
- DISPLAY AREAS
- HOSPITALS  
with PACS / Bed Status Board
- HALL WAYS
- RESTAURANTS
- SHOW CASES
- EXHIBITIONS
- etc ANY PRESENTATIONS

## SPECIFICATION

SPEC CATEGORY			MODEL			
			uTable C40	uTable C42	uTable E46	uTable E55
PANEL	ULTRA SUPER NARROW	INCH	40INCH LCD	42INCH LCD	46INCH LED	55INCH LED
		RESOLUTION(HORIZONTAL)	1920			
		RESOLUTION(VERTICAL)	1080			
		BRIGHTNESS	450cd/m²(Typ.)	700cd/m²(Typ.)	600cd/m²(Typ.)	600cd/m²(Typ.)
		CONTRAST RATIO	3000:1 (Typ.)			
		VIEWING ANGLE	178º			
		PANEL RESPONSE TIME	8ms(Typ. GTG)			
		ASPECT RATIO	16:9			
		REFRESH FREQUENCY	60hz			
		BEZEL COLOR	White or Yellow	Black	Black	Black
		PANEL	Min 30,000 hour			
		SPECIAL FUNCTION		TOUCH	10 POINT / 32 Point	
FAN COOLING SYSTEM	Yes					
AUTO DIMMING CONTROL	No					
INPUT		USB	2			
		POWER SW	1			
		IR SENSOR	1			
		POWER LED	1			
		DSUB (FOR USER PC INPUT)	1			
		DVI (FOR INTERNAL PC INPUT)	1(Internal)			
		AC IN	1			
		LAN	1			
OUTPUT		EXTERNAL AC CODE (FOR USER PC POWER)		1	1	
		SOUND	No			
PC		Optional				
SW		Optional				
TEMP.	OPERATING TEMP.	0°C - 35°C				
POWER		POWER(AC)	100V - 240V			
		POWER CONSUMPTION	260W	220W	240W	270W
DIMENSION	W(MM) X H(MM) X D(MM)	1085 x 500 x 130	1148 x 732 x 764.9	TBD	TBD	
WEIGHT		NET WEIGHT	40Kg	60Kg	70Kg	85Kg
		GROSS WEIGHT	50Kg	80Kg	85Kg	95Kg
OSD	LANGUAGE	Multi Languages				



Learn more at [www.a1-sys.com](http://www.a1-sys.com)  
 For additional questions contact [info@a1-sys.com](mailto:info@a1-sys.com)  
 ACN 114 333 229

